

first for homes

first for property in life - firstforhomes.co.uk

Contact Allan England's Team

01592 752 944



Lennox Court, Glenrothes

Offers over £174,995

Lennox Court, Glenrothes

Beautifully Presented 3-Bedroom Semi Detached Villa with Driveway, Located in the Sought After of Balgeddie, Glenrothes

Allan England's team at First For Homes welcome to the market this beautifully presented 3 Bedroom Semi-Detached Villa situated within a cul-de-sac setting within the desirable of Balgeddie. The property has been tastefully decorated throughout and comprises on the ground floor level: entrance hall, spacious lounge providing access to dining room, modern kitchen. The upper level offers 3 Bedrooms (2 double, 1 single), modern family bathroom with overhead shower. Externally there are small garden grounds to the front and generous south facing rear garden. Driveway to the side of the property for approx 1/2 cars. Early viewing is highly recommended to ensure you don't miss out!

EPC - C
COUNCIL TAX - D
HOME REPORT - £180,000

Call first for homes - first for trust... first for service... first for aftercare.

Glenrothes is regarded as one of the most successful Towns in Scotland with a wealth of local amenities including Kingdom Shopping Centre as well as sport and leisure at Michael Woods and a multi-screen cinema. Glenrothes boasts its very own 18-hole Golf course and both Primary and Secondary schooling are available. For the commuter the A92 allows swift access to Edinburgh and there are railway stations at both Thornton and Markinch.





SITUATION – Glenrothes

ENTRANCE HALLWAY

LOUNGE 15'7" x 10'2" approx (4.77m x 3.12m approx)

DINING ROOM

10'9" x 8'0" approx (3.30m x 2.45m approx)

KITCHEN 10'9" x 7'5" approx (3.30m x 2.27m approx)

UPPER LEVEL

BEDROOM 1

12'10" x 9'8" approx (3.93m x 2.95m approx)

BEDROOM 2

13'7" x 7'8" approx (4.16m x 2.35m approx)

BEDROOM 3 (AT WIDEST POINTS)

10'6" x 7'11" approx (3.21m x 2.43m approx)

FAMILY BATHROOM

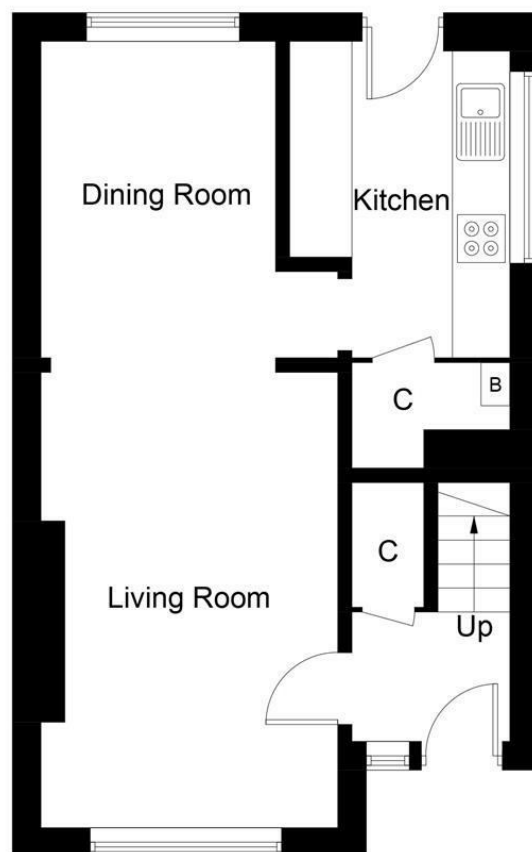
7'1" x 5'11" approx (2.16m x 1.81m approx)

DRIVEWAY TO SIDE APPROX 2 CARS

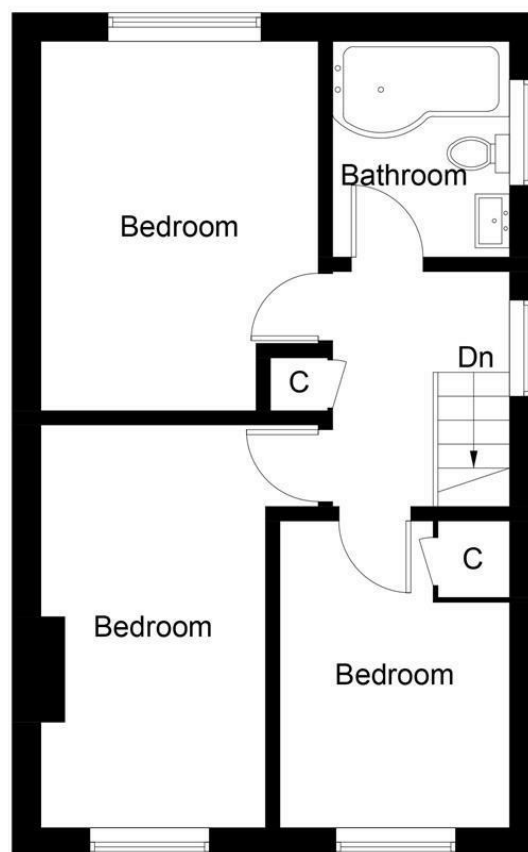
GARDEN GROUNDS

INFORMATION





Ground Floor



First Floor

Illustration for identification purposes only, measurements are approximate, not to scale. Fourlabs.co © (ID1269452)

Information

These particulars are prepared on the basis of information provided by our clients. We have not tested the electrical system or any electrical appliances, nor where applicable, any central heating system. All sizes are recorded by electronic tape measurement to give an indicative, approximate size only. Prospective purchasers should make their own enquiries – no warranty is given or implied. This schedule is not intended to, and does not form any contract.

FREE Valuation

Selling Your Home?

Choose first for homes - a highly experienced estate agency team you can trust to sell your home at the highest possible price. Offering fantastic savings on selling fees, with no compromise on service, free professional photography highlighting your home in its best light, first for homes will be your first choice. Contact us today to arrange your appointment.



first for trust



first for service



first for aftercare

first for homes

first for property in life - firstforhomes.co.uk

Contact Allan England's Team

01592 752 944

32 North Street, Glenrothes, Fife KY7 5NA

Fax: 01592 807947

sales@firstforhomes.co.uk

www.firstforhomes.co.uk